






CAR8949Y39PESLT	LEFT	TRAILING	8438069	Ø 27.0	Ø 31.8	Ø 38.1	2.49 kg	STAINLESS STEEL PISTONS
CAR8949Y39PESRT	RIGHT		8438070					
Alcon Part No.	Hand	Orientation	Customer Part Number	Small Bore	Centre Bore	Large Bore	Mass (less pads)	Remarks

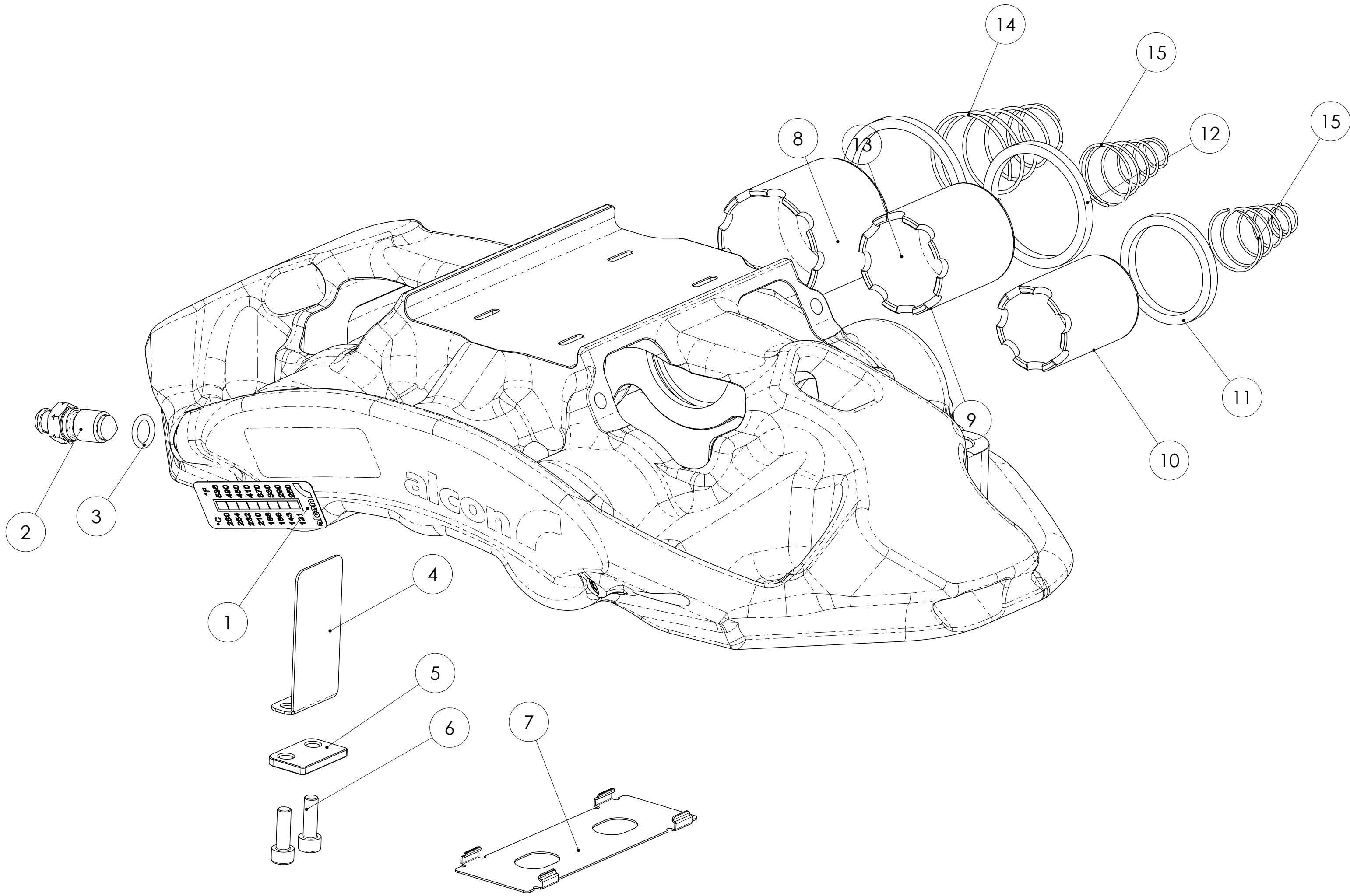
NOTES:

- N1: LEFT HAND TRAILING CALIPER AS DRAWN
RIGHT HAND TRAILING CALIPER SYMMETRICALLY OPPOSITE
- N2: BLEED SCREW: 0.375"-24 UNF TORQUE: 14 Nm HOT
18 Nm COLD
- N3: INSTALL CALIPER WITH PAD LEVEL WITH O.D. OF DISC &
A MIN CLEARANCE BETWEEN DISC & CALIPER OF 2.5mm
- N4: ALL DIMENSIONS ARE NOMINAL UNLESS STATED. SOLID
MODELS ARE AVAILABLE FROM ALCON FOR INSTALLATION
PURPOSES
- N5: TOTAL CALIPER PISTON AREA: 50.14cm²
- N6: CALIPER MOUNTING FACE
- N7: FLUID INLET PORT
- N8: CALIPERS SUPPLIED LESS PADS
- N9: DISC SIZE: Ø380 x 36mm MAX
- N10: Ø380 DISC AXIS
- N11: LASER MARKING INSTRUCTIONS
- N12: DIMENSIONS FOR PAD FITMENT
- N13: ALL DIMENSIONS IN mm

A UPDATE FOLLOWING TEST FIT - INCLUSION OF BRACKET, WASHERS AND BOLTS		- EC3036		LR 18.07.19			
A FIRST RELEASE		- NP1584		LR 30.01.19	GW 30.07.19		
Issue Change				LOC	DRN BY / Date	CHK BY / Date	
DRAWN IN SOLIDWORKS 		SCALE: 1:1		DRAWN BY: L. RATCLIFFE		ALCON COMPONENTS LIMITED APOLLO TAMWORTH STAFFORDSHIRE B79 7TN TEL: +44(0)1827 723700	
WEIGHT: SEE TABLE		DATE: 30.01.19		CHK'D BY: G. WISEMAN			 <i>empowering your advantage</i>
REMOVE ALL SHARP EDGES, BURRS AND SWarf		MATERIAL:		NOTE: THIS DRAWING AND INFORMATION THEREUPON IS THE PROPERTY OF ALCON COMPONENTS LTD. IT IS LENT ON THE CONDITION THAT IT IN WHOLE OR IN PART, SHALL NOT BE REPRODUCED, COPIED, LENT OR DISCLOSED TO ANY PERSON WITHOUT WRITTEN CONSENT OF ALCON AND SHALL BE RETURNED TO ALCON COMPONENTS LTD.		R	
FINISH:  Ra 		HEAT TREATMENT/ CURE CYCLE:		APP'D BY:			CALIPER INSTALLATION
ALL DIMENSIONS ARE BEFORE TREATMENT UNLESS STATED				DATE: NO. OF INSPECTION FEATURES:		PART NUMBER: CAR89197	
TOLERANCES UNLESS STATED ±0.2. ANGLES: ±0.0°		SURFACE TREATMENT:					
							

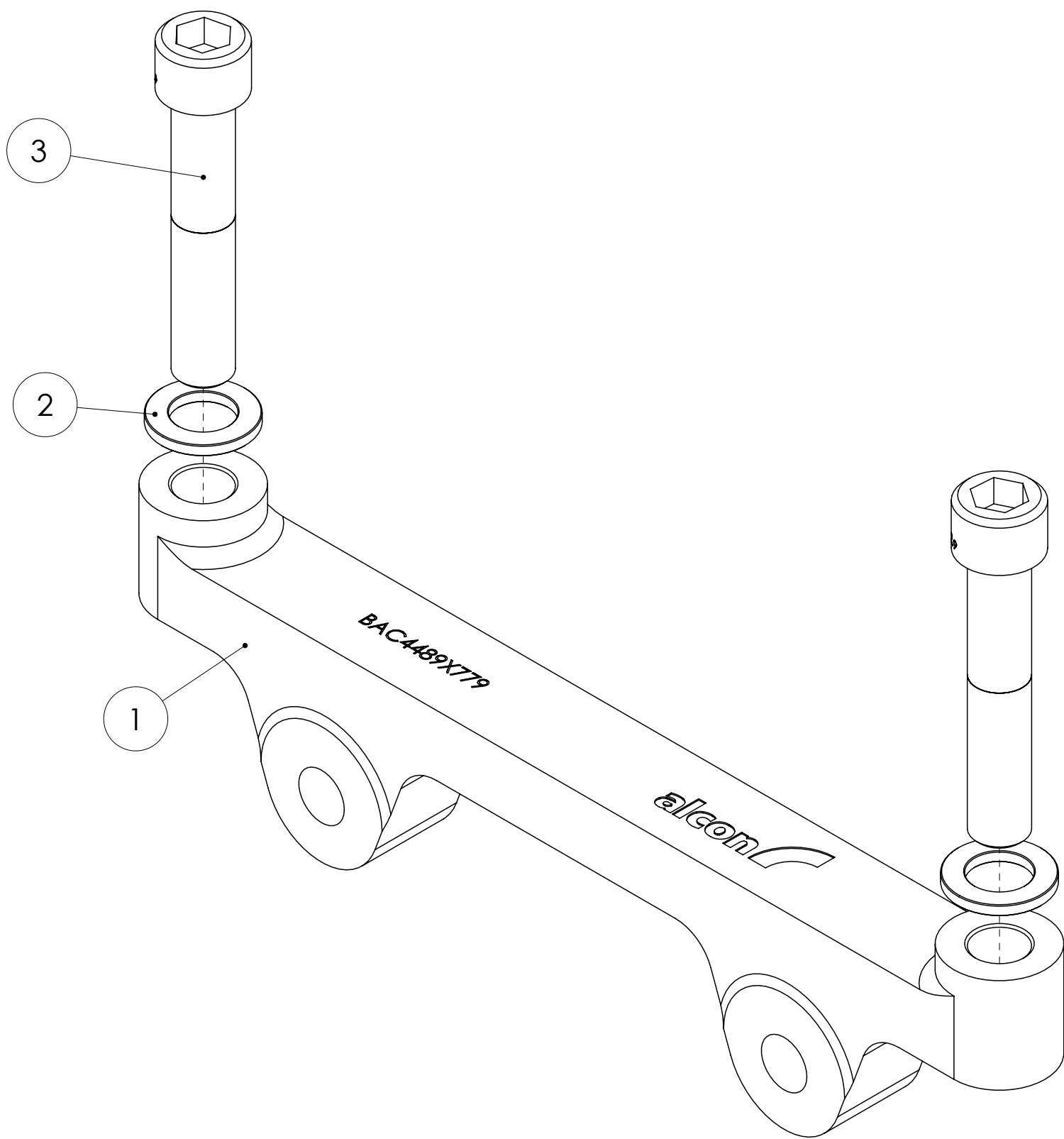
SPARE PARTS - CALIPER ASSEMBLY

ITEM NO.	PART NUMBER	QTY.	DESCRIPTION
	CAR8949Y39PESLT / RT	1	CALIPER ASSEMBLY
1	THS0080X087	1	THERMAL STRIP - ALCON 121°C - 280°C
2	FSB3430X689	2	BLEED SCREW 3/8"UNF
3	SER0080X176	2	7.1x1.6mm EPDM O-SEAL
4	PSC4489X775	4	WEAR PLATE
5	SSC4489X776	4	PAD SUPPORT
6	BSS0080X666	8	8-32 UNC x 1/2" SOCKET HEAD
7	PSC4489X774	1	UPPER WEAR PLATE
8	PSV3837X280	2	Ø38.1 STAINLESS STEEL PISTON
9	PSV3237X280	2	Ø31.8 STAINLESS STEEL PISTON
10	PSV2737X280	2	Ø27.0 STAINLESS STEEL PISTON
11	SES2700X751	2	Ø27 PISTON SEAL
12	SES3200X751	2	Ø31.8 PISTON SEAL
13	SES3800X751	2	Ø38.1 PISTON SEAL
14	SSC3435X609	1	2Kg ANTI-KNOCKBACK SPRING
15	SSC3435X616	2	2Kg ANTI-KNOCKBACK SPRING



SPARE PARTS - BRACKET ASSEMBLY

ITEM NO.	PART NUMBER	QTY.	DESCRIPTION
	BAA4489X779	1	BRACKET ASSEMBLY
1	BAC4489X779	1	BRACKET
2	WSF0080X692	2	Ø22 STEEL WASHER
3	BSS0080X1054G	2	M12x1.75x65 CAP HEAD



DRAWN IN SOLIDWORKS	SCALE: 1:1	DRAWN BY: L. RATCLIFFE	ALCON COMPONENTS LIMITED
WEIGHT: SEE TABLE		DATE: 30.01.19	APOLLO TAMWORTH STAFFORDSHIRE B79 7TN TEL: +44(0)1827 723700
REMOVE ALL SHARP EDGES, BURRS AND SWarf	MATERIAL:	CHK'D BY: G. WISEMAN	NOTE: THIS DRAWING AND INFORMATION THERE UPON IS THE PROPERTY OF ALCON COMPONENTS LTD. IT IS LENT ON THE CONDITION THAT IT IN WHOLE OR IN PART, SHALL NOT BE REPRODUCED, COPIED, LENT OR DISCLOSED TO ANY PERSON WITHOUT WRITTEN CONSENT OF ALCON AND SHALL BE RETURNED TO ALCON COMPONENTS LTD.
FINISH: Ra Ra	HEAT TREATMENT/ CURE CYCLE:	DATE: 30.01.19	APPV'D BY:
ALL DIMENSIONS ARE BEFORE TREATMENT UNLESS STATED			PART NAME (Max. 40 digits): CALIPER INSTALLATION
TOLERANCES UNLESS STATED ±0.2. ANGLES: ±0.0°	SURFACE TREATMENT:	DATE: NO. OF INSPECTION FEATURES:	PART NUMBER: CAR89i97
			2 of 2 A0