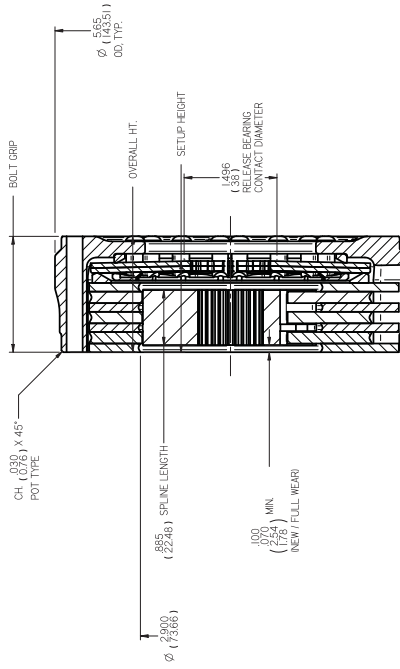
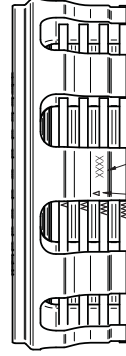
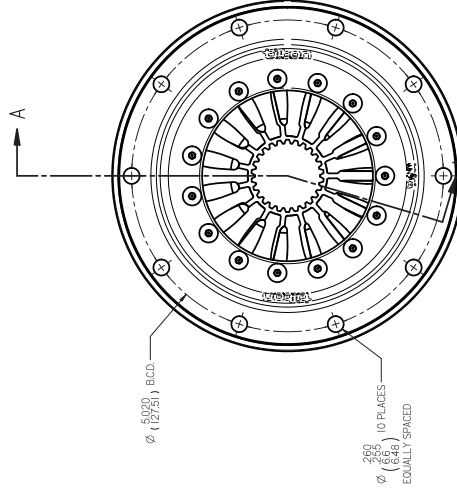


4 PLATE, STEP TYPE
 .700 (177.8) SPLINE LENGTH



3 PLATE, POT TYPE

CLUTCH P/N	# OF DISCS	FLYWHEEL MOUNTING		SETUP HEIGHT (NEW)		SETUP HEIGHT (.010 WEAR)		BOLT GRIP - OVERALL HEIGHT	
		IN	MM	IN	MM	IN	MM	IN	MM
6513XXX-P	3	POT	1.465	37.21	1.505	38.23	1.864	47.35	
6513XXX-S	3	STEP	1.465	37.21	1.505	38.23	1.963	49.86	
6514XXX-P	4	POT	1.790	45.47	1.830	46.48	2.189	55.60	
6514XXX-S	4	STEP	1.790	45.47	1.830	46.48	2.288	58.12	



ALIGNMENT MARKS.
 MAINTAIN ORDER AND
 ORIENTATION.

- NOTES:
1. PRIMARY DIMENSIONS ARE INCHES. SECONDARY DIMENSIONS (MM).
 2. SUPPLIED WITH .160" (.406mm) THICK PRESSURE PLATE. ADDITIONAL PLATES AVAILABLE (.010"/.25mm INCREMENTAL THICKNESS).
 3. SUPPLIED WITH SPLINED DRIVE HUB. SPECIFY SPLINE WHEN ORDERING.
 4. MUST BE USED WITH RADIUS FACED RELEASE BEARING. .38mm CONTACT DIAMETER HIGHLY RECOMMENDED.
 5. CARBON PLATE THICKNESSES VARY BY PART NUMBER. REFER TO CARBON/CARBON CLUTCH BUILD RECORD PER INDIVIDUAL CLUTCH SERIAL NUMBER.

TILTON ENGINEERING, INC.
 75 BABY STREET P.O. BOX 1797 BUELLTON, CALIFORNIA 94927 USA
 (805) 688-2333 FAX (805) 688-2745

TITLE: **INSTALLATION DRAWING**
CLUTCH, CARBON/CARBON, OT-V 4.5"

DRN BY: LUND CHD WAHL SCALE: 1:1 DWS
 PN: 6514XXX DATE: 8/5/2016 SHEET 1 OF 1 REV: **6397** NC